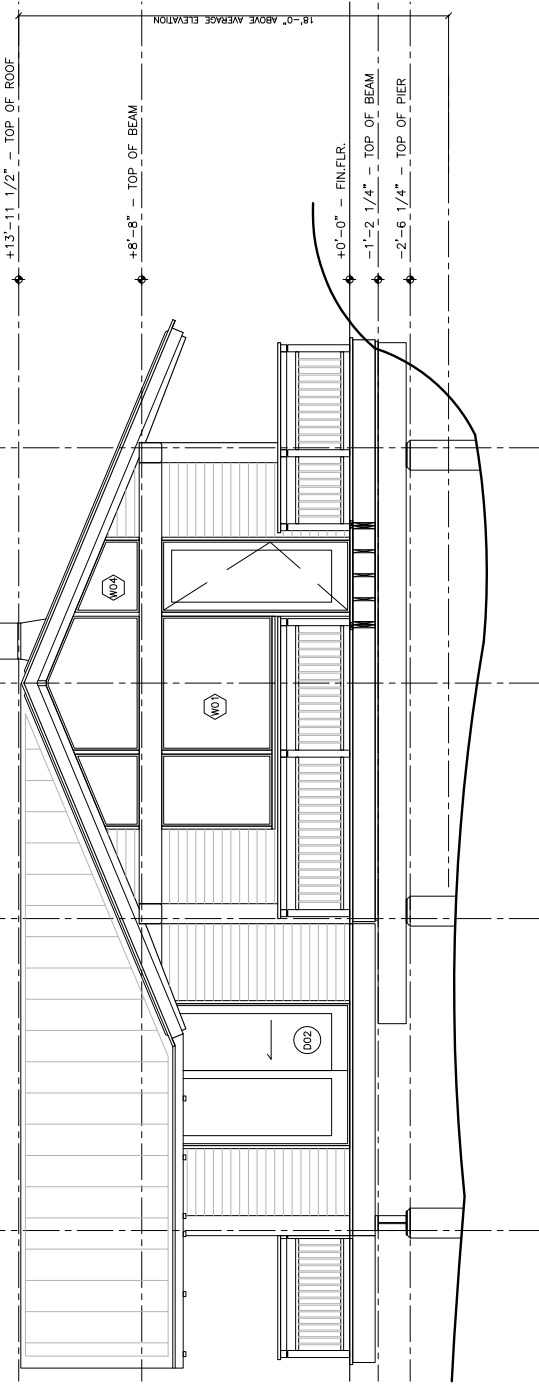
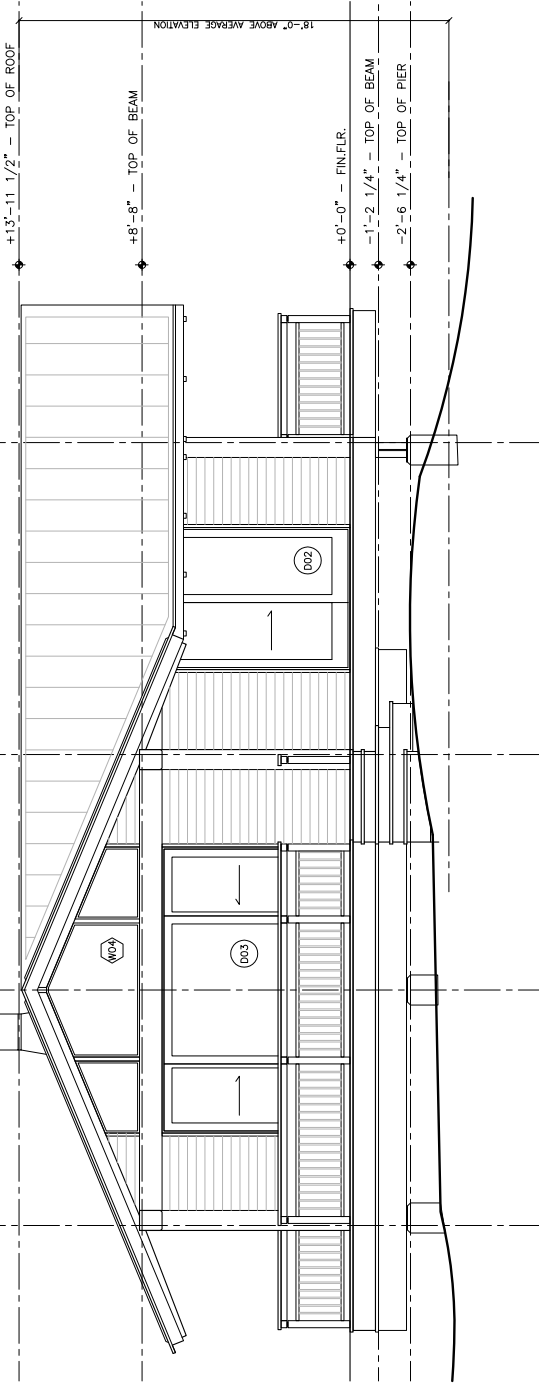


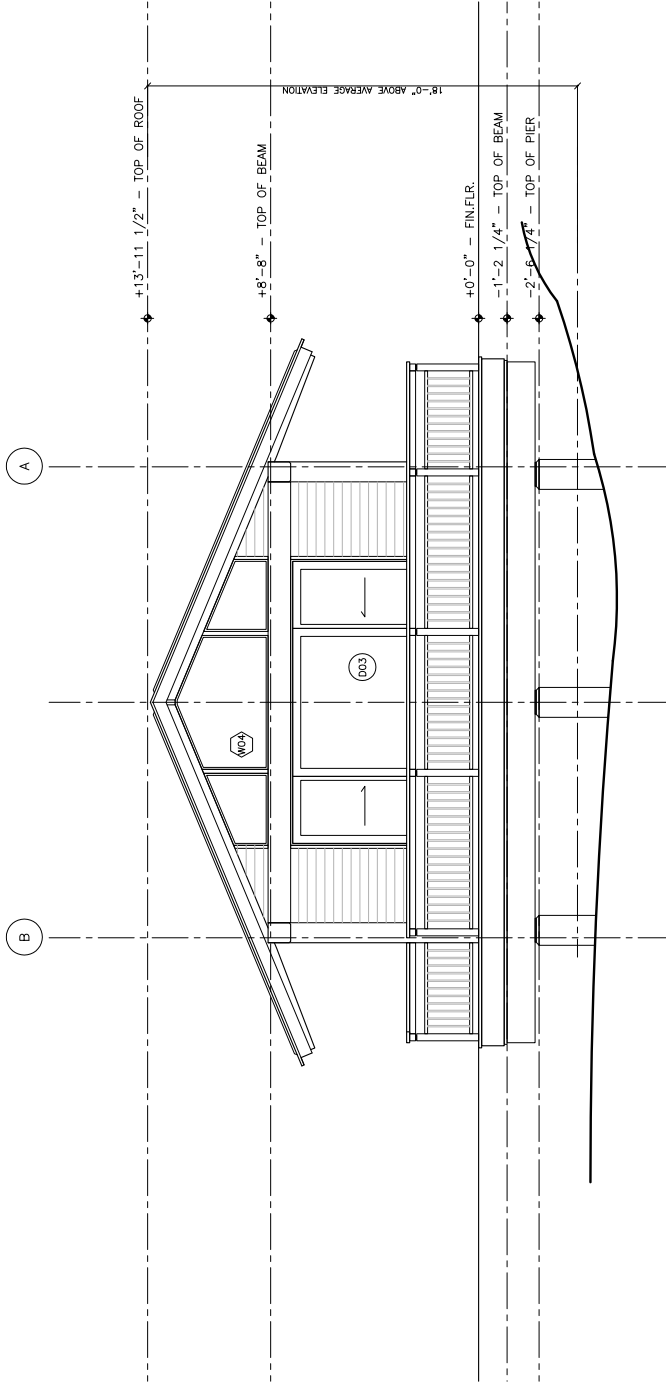
ALL WORK SHALL BE CARRIED OUT IN ACCORDANCE WITH ALL BY-LAWS AND CODES APPLICABLE TO THE LOCATION. ALL DIMENSIONS AND INFORMATION SHALL BE CHECKED ON SITE AND ANY VARIANCES REPORTED TO THE ARCHITECT PRIOR TO START OF WORK. THIS DRAWING IS NOT TO BE USED FOR CONSTRUCTION UNTIL SIGNED BY THE ARCHITECT. THIS DRAWING AND THE DESIGN HEREIN ARE THE COPYRIGHT OF THE ARCHITECT AND MAY NOT BE REPRODUCED, ALTERED OR REUSED WITHOUT WRITTEN CONSENT. THIS DRAWING MUST NOT BE SCALED.



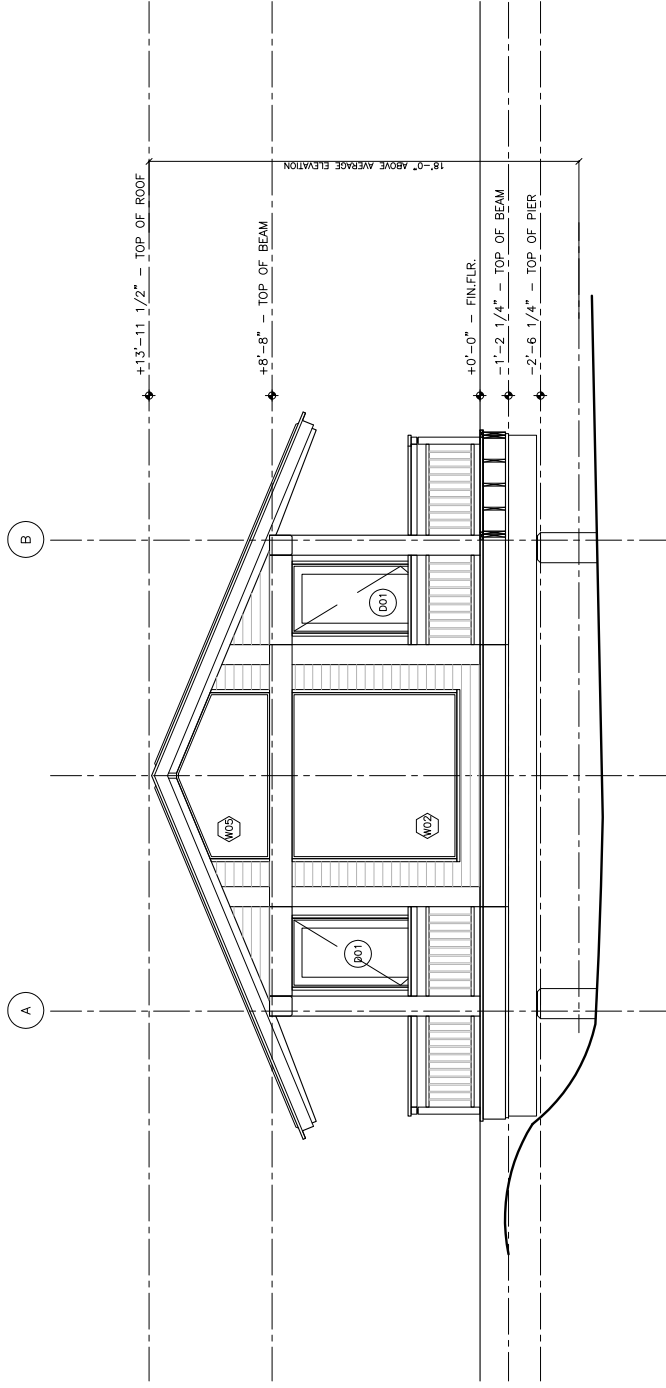
MAIN COTTAGE - EAST FACE



MAIN COTTAGE - WEST FACE



SLEEPING CABIN - EAST FACE



SLEEPING CABIN - WEST FACE

NO.	REVISIONS	DATE
5	AS BUILT	06/17/08
4	REV.1	01/08/03
3	CONSTRUCTION / BP 4.	15/05/03

**WILLIAM R. DEWSON
ARCHITECT**
135 ALCORN AVENUE,
TORONTO, ONTARIO
M4V 1E5
416 966 6635

ARCHITECT:
**BLACKWELL ENGINEERING
LIMITED**
SUITE 405, 19 DUNCAN ST.,
TORONTO, ONTARIO
M5H 3H1
416 593 5300

CONSULTANT:
ALLEN COTTAGE
ISLAND NO. 347
GEORGIAN BAY, ONTARIO
PROJECT NO: 0110

**ELEVATIONS
WEST & EAST FACES**

DRAWN BY: Jc / ds
CHECKED BY: WFD

1/8" = 1'-0"

A7