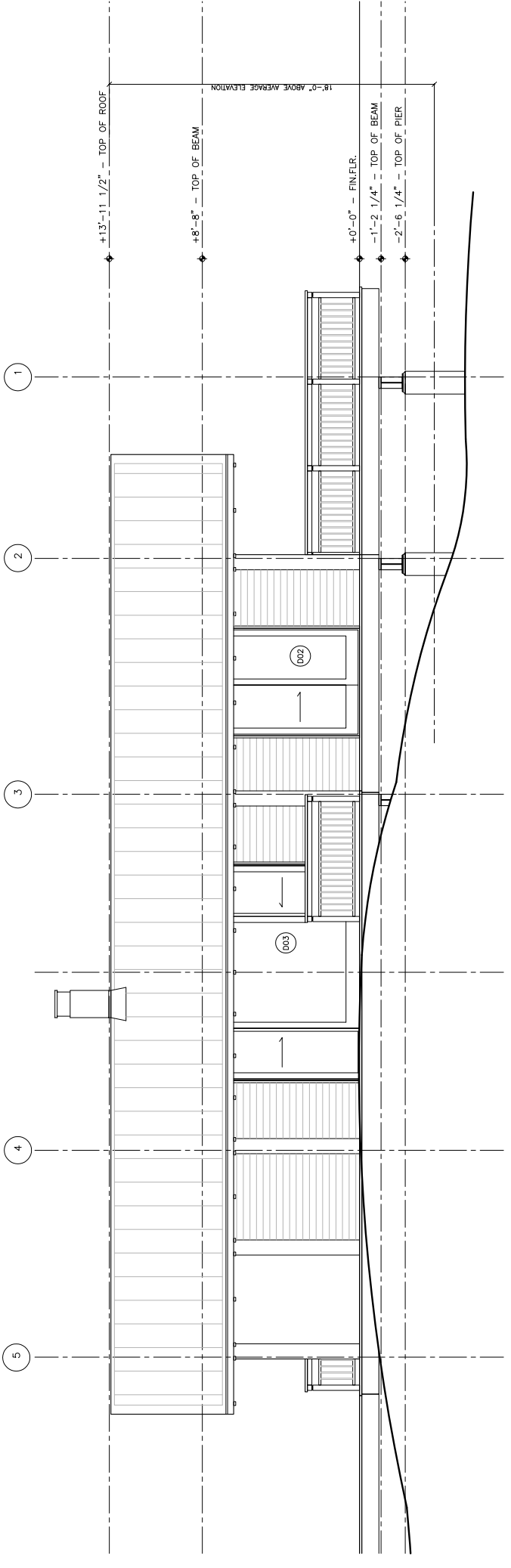
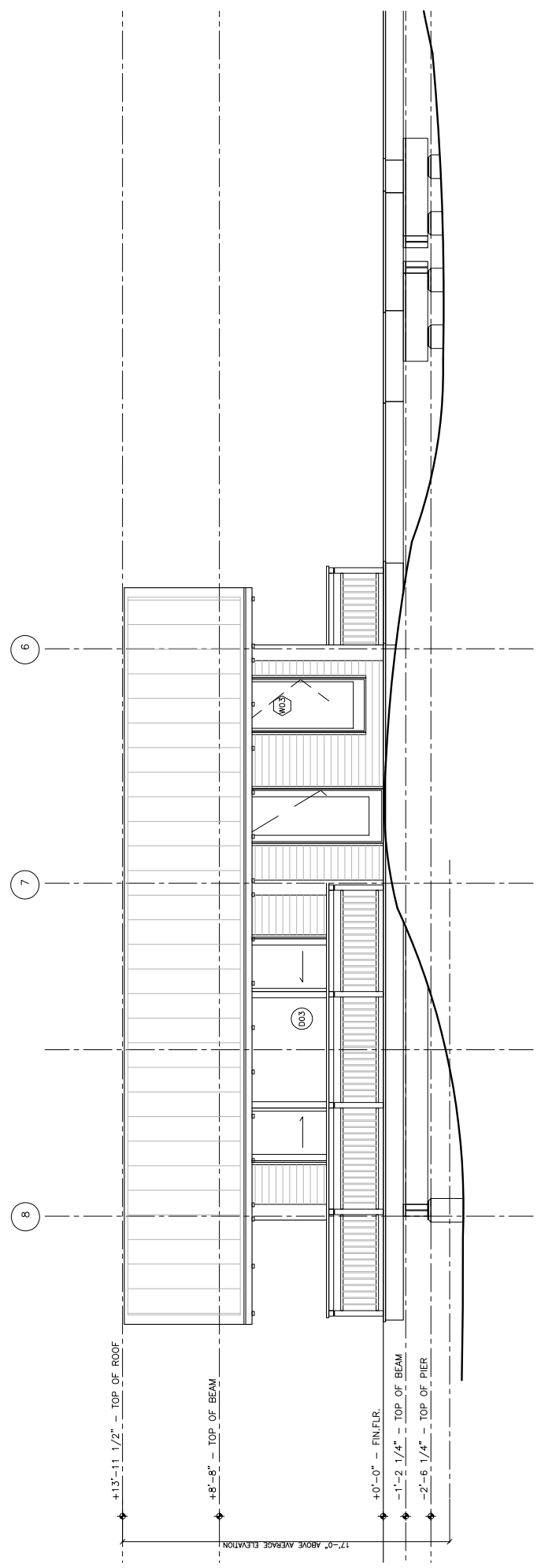


ALL WORK SHALL BE CARRIED OUT IN ACCORDANCE WITH ALL BY-LAWS AND CODES APPLICABLE TO THE LOCATION. ALL DIMENSIONS AND INFORMATION SHALL BE CHECKED ON SITE AND ANY VARIANCES REPORTED TO THE ARCHITECT PRIOR TO START OF WORK. THIS DRAWING IS NOT TO BE USED FOR CONSTRUCTION UNTIL SIGNED BY THE ARCHITECT. THIS DRAWING AND THE DESIGN HEREIN ARE THE COPYRIGHT OF THE ARCHITECT AND MAY NOT BE REPRODUCED, ALTERED OR REUSED WITHOUT WRITTEN CONSENT. THIS DRAWING MUST NOT BE SCALED.



MAIN COTTAGE



SLEEPING CABIN

NO.	REVISIONS	DATE
5	AS BUILT	06/17/08
4	REV.1	07/08/03
3	CONSTRUCTION / BP 4.	15/05/03

**WILLIAM R. DEWSON
ARCHITECT**
135 ALCORN AVENUE,
TORONTO, ONTARIO
M4V 1E5
416 966 6635

**BLACKWELL ENGINEERING
LIMITED**
SUITE 405, 19 DUNCAN ST.,
TORONTO, ONTARIO
M5H 3H1
416 593 5300

ALLEN COTTAGE
ISLAND NO. 347
GEORGIAN BAY, ONTARIO
PROJECT NO: 0110

**ELEVATIONS
NORTH FACE**

DRAWN BY: Jc / ds
CHECKED BY: WFD
1/8" = 1'-0"

A8