

West York Georgian Bay



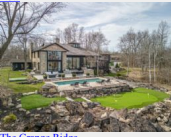
All Real Estate Listings



[North View, Big Bay, Georgian Bluffs](#)

An opportunity to purchase 33 1/2 acre self-sufficient organic farm with sweeping views over Georgian Bay and the islands of Griffith, White Cloud and Hay. There is a [more](#)

New



[The Grange Ridge](#)

A very special country property with an impressive residence worthy of Architectural Digest. The views over the property and pool to the Toronto Skyline are spectacular. Come [more](#)



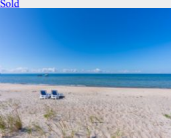
[Residential Building Lots, Guelph](#)

Newly created residential building lots in Exhibition Park area in the Junction. This is a great family neighbourhood! Walking distance to The Fixed Gear Brewing Canteen, [more](#)



[Totterham Estate Property](#)

An incredible opportunity to acquire this 80 acre parcel to build your country estate! This property consists of rolling hills which is the ideal building location to enjoy [more](#)



[Georgian Bay Beach House, Tim](#)

Indulge in unmatched beachside living with a 2700 sq. ft. custom designed home on Nottawaga Beach. This distinctive 5-bedroom, 4-bathroom 1.5-storey home includes a separate [more](#)



[Apple Ridge Farm](#)

Apple Ridge is truly a special property. A private estate of over 100 acres for those seeking the best view in Caledon, gazing at the stars while watching the lights of the [more](#)



[Kina Country Home](#)

Renovated country home & studio plus a restored century bank barn close to Kettleby on almost 5 acres. Convenient to area schools, Aurora and Highway 400. Crisp [more](#)



[Percy Lake 75 Acres](#)

A rare opportunity to acquire an incredibly large estate lot property. With just shy of 1/2 a mile of water frontage. This stunning 75-acre property is already subdivided [more](#)



[Caledon Farmland Investment Opportunity](#)

A must see investment property and/or gorgeous country retreat! A beautiful 145 acre farm that stretches from Mountainview Road to Airport Road, just north of Caledon East. [more](#)



[Percy Lake, Haliburton](#)

Privacy guaranteed on an untouched 4.5 acre south-facing cove lot, Flatware Cove Trail. Over 400 feet frontage of sandy beach, crystal clear water, building lot covered in [more](#)





[171 Kingscross Drive, King](#)
Elegant 4-bedroom home in prestigious Kingscross Estates. Fully renovated home on private 2-acre lot with pool. Minutes to top schools. Wonderful flow for entertaining, with [more](#)
[Sold](#)



[Admirals Gate, Collingwood](#)
Don't miss this incredible waterfront opportunity in the highly sought-after Admirals Gate! This stunning end unit offers a truly spectacular living experience, boasting [more](#)



[2686 Beerman Line](#)
107 acres (as per Geowarehouse) of breathtaking land to build your dream country estate. All the privacy you could wish for. A prime building lot just 15 minutes to Orillia. [more](#)
[New Price](#)



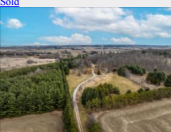
[Clover Creek Farm](#)
Charming property with views over your own valley. 5 bedroom updated century home + guest house and an immaculate bank barn with 5 stalls. A wonderful layout with walk-out [more](#)
[Sold](#)



[Dufferin Estate Lot](#)
The building lot you have been waiting for! Conveniently located minutes north of Davis Drive West on Dufferin Street, in prestigious King Township. 36 acres of mature [more](#)
[New Listing](#)



[32 Webber Island](#)
One of the last opportunities to build on Webber Island! A 2.6-acre premium lot with 469 ft. of west-facing shoreline, mixes smooth granite and a natural beach. The building [more](#)
[Sold](#)



[Bond Hill - Country House Investment](#)
Amazing views from this privately sited home on 25 acres. A country property with long-term investment potential. Open lands border developer owned lands. Buy land and wait! [more](#)
[Sold](#)



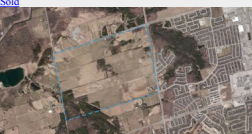
[85 Acres Near Urban Boundary](#)
Here is your chance to acquire 85 acres close to an urban boundary! 2 houses and outbuildings. Main residence is a well constructed walk-out bungalow with a footprint of 3800 [more](#)
[Coming Soon!](#)



[Sandy Island, Georgian Bay](#)
Wow! Sandy Island cottage on 5.75 acres with your own beach, long southwest views & an industrial strength dock. Come relax on Georgian Bay. [more](#)
[Reduced](#)



[Original 8th Concession Estate](#)
One of King townships most noted properties! Character filled original brick home with an impressive glass and stone addition overlooking the spectacular gardens, stone [more](#)
[Sold](#)



[687 acre Land Banking Opportunity](#)
One of the largest parcels of privately owned land in all of York Region! 687 acres located on the border of Newmarket. [more](#)
[New Listing](#)



[30 Webber Island, Honey Harbour, Georgian Bay](#)
One of the last premium lots of this calibre being offered. 4.2-acre southern peninsula of Webber Island with 1417 ft. of meandering shoreline featuring protective coves, [more](#)
[New Listing](#)



[Stone House on 60 acres](#)
A storybook setting! An original Ontario stone house with board & batten addition set alongside a spring-fed pond with forested hills and open meadows! A charming 3-bay [more](#)
[Sold](#)



1600 Acre Private Island, Georgian Bay

Located off the western shores of Georgian Bay, measuring approximately 1600 acres in size is the ruggedly beautiful Hay Island. It's one of the largest privately held [...more](#)



100 Acres, King

It's getting harder and harder to find large vacant acreage in King. 100 gently rolling acres with scenic views, neatly cropped land plus mature woodlot and pond. [...more](#)



Glenagate Farm

Glenagate Farm is a 90 acre, working standardbred breeding farm located just outside of Hillsburgh, Ontario. Through the impressive front iron gate are two fully [...more](#)



Hockley Valley Land

Very private, blank canvas of just under 100 acres on a no-through way road. Minutes outside of Hockley Valley is this increasingly rare to find opportunity to acquire a [...more](#)



90+ Acre Private Peninsula, Cognashene

The 90+ acre peninsula situated north-west of Bone Island offers a unique mixture of undulating elevations, an abundance of forest, and various granite outcroppings. Flanked [...more](#)

More : Prev 12345678 Next

all
franchise
commercial
home &
commercial
vacation
Georgian
Bay
investments
vacation
and
resort
other
real
estate
about
contact
us

MOFFAT DUNLAP
REAL ESTATE LIMITED
Moffat Dunlap Real Estate Limited, Brokerage
16630 Dufferin Street, King City, ON L7B 1K5
Tel: 905.841.7430 www.moffatdunlap.com



Moffat Dunlap
Real Estate Limited,
Brokerage
16630 Dufferin Street
King City
ON L7B 1K5
905.841.7430
[Home](#) | [About Us](#)
[Web Site](#) | [Contact Us](#)

Real Estate
Franchise
Commercial
Vacation
Investments

Keyword(s)

Search

X

English
Afrikaans
Arabic
Chinese (simplified)
Chinese (Traditional)
Danish
Dutch
Finnish
French
German
Greek
Hebrew
Hindi
Icelandic
Indonesian
Italian
Japanese
Korean
Norwegian
Persian
Polish
Portuguese
Punjabi
Russian
Spanish
Swedish
Thai
Turkish
Urdu
Vietnamese
English
Italian
Japanese
Korean
Norwegian
Persian
Polish
Portuguese
Punjabi
Russian
Spanish
Swedish
Thai
Turkish
Urdu
Vietnamese