

West York, Georgian Bay



All
Real
Estate
Listings

[New Listing](#)



[North View, Big Bay, Georgian Bluffs](#)

An opportunity to purchase a 36 acre self-sufficient organic farm with sweeping views over Georgian Bay and the islands of Griffith, White Cloud and Hay. There is a [more](#)

[New](#)



[The Grange Ridge](#)

A very special country property with an impressive residence worthy of Architectural Digest. The views over the property and pool to the Toronto Skyline are spectacular. Come [more](#)

[New Listing](#)



[Residential Building Lots, Guelph](#)

Newly created residential building lots in Exhibition Park area in the Junction. This is a great family neighbourhood! Walking distance to The Fixed Gear Brewing Canteen. [more](#)

[New Listing](#)



[Totterham Estate Property](#)

An incredible opportunity to acquire this 80 acre parcel to build your country estate! This property consists of rolling hills which is the ideal building location to enjoy [more](#)

[Sold](#)



[Georgian Bay Beach House, Tim](#)

Indulge in unmatched beachside living with a 2700 sq. ft. custom designed home on Nottawaga Beach. This distinctive 5-bedroom, 4-bathroom 1.5-storey home includes a separate [more](#)

[New Listing](#)



[Percy Lake 75 Acres](#)

A rare opportunity to acquire an incredibly large estate lot property. With just shy of 1/2 a mile of water frontage. This stunning 75-acre property is already subdivided [more](#)

[New Price](#)



[Apple Ridge Farm](#)

Apple Ridge is truly a special property. A private estate of over 100 acres for those seeking the best view in Caledon, gazing at the stars while watching the lights of the [more](#)

[New Listing](#)



[King Country Home](#)

Renovated country home & studio plus a restored century bank barn close to Kettleby on almost 5 acres. Convenient to area schools, Aurora and Highway 400. Crisp [more](#)

[New Listing](#)



[Percy Lake, Haliburton](#)

Privacy guaranteed on an untouched 4.5 acre south-facing cove lot, Flatware Cove Trail. Over 400 feet frontage of sandy beach, crystal clear water, building lot covered in [more](#)

[New Listing](#)



[Caledon Farmland Investment Opportunity](#)

A must see investment property and/or gorgeous country retreat! A beautiful 145 acre farm that stretches from Mountainview Road to Airport Road, just north of Caledon East. [more](#)

[Sold](#)





[Admirals Gate, Collingwood](#)
Don't miss this incredible waterfront opportunity in the highly sought-after Admirals Gate! This stunning end unit offers a truly spectacular living experience, boasting [more](#)



[2686 Brennan Line](#)
107 acres (as per Geowarehouse) of breathtaking land to build your dream country estate. All the privacy you could wish for. A prime building lot just 15 minutes to Orillia. [more](#)
[New Price](#)



[171 Kinescross Drive, King](#)
Elegant 4-bedroom home in prestigious Kingscross Estates. Fully renovated home on private 2-acre lot with pool. Minutes to top schools. Wonderful flow for entertaining, with [more](#)
[Sold](#)



[Dufferin Estate Lot](#)
The building lot you have been waiting for! Conveniently located minutes north of Davis Drive West on Dufferin Street, in prestigious King Township. 36 acres of mature [more](#)
[New Listing](#)



[32 Webber Island](#)
One of the last opportunities to build on Webber Island! A 2.6-acre premium lot with 469 ft. of west-facing shoreline, mixes smooth granite and a natural beach. The building [more](#)
[New Price](#)



[Clover Creek Farm](#)
Charming property with views over your own valley. 5 bedroom updated century home + guest house and an immaculate bank barn with 5 stalls. A wonderful layout with walk-out [more](#)
[Sold](#)



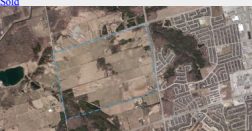
[85 Acres Near Urban Boundary](#)
Here is your chance to acquire 85 acres close to an urban boundary! 2 houses and outbuildings. Main residence is a well constructed walk-out bungalow with a footprint of 3800 [more](#)
[Coming Soon!](#)



[Sandy Island, Georgian Bay](#)
Wow! Sandy Island cottage on 5.75 acres with your own beach, long southwest views & an industrial strength dock. Come relax on Georgian Bay. [more](#)
[Sold](#)



[Rond Hill - Country House Investment](#)
Amazing views from this privately sited home on 25 acres. A country property with long-term investment potential. Open lands border developer owned lands. Buy land and wait! [more](#)
[Sold](#)



[687 acre Land Banking Opportunity](#)
One of the largest parcels of privately owned land in all of York Region! 687 acres located on the border of Newmarket. [more](#)
[New Listing](#)



[30 Webber Island, Honey Harbour, Georgian Bay](#)
One of the last premium lots of this calibre being offered. 4.2-acre southern peninsula of Webber Island with 1417 ft. of meandering shoreline featuring protective coves, [more](#)
[Reduced](#)



[Original 8th Concession Estate](#)
One of King townships most noted properties! Character filled original brick home with an impressive glass and stone addition overlooking the spectacular gardens, stone [more](#)
[Sold](#)



[1600 Acre Private Island, Georgian Bay](#)
Located off the western shores of Georgian Bay, measuring approximately 1600 acres in size is the ruggedly beautiful Hay Island. It's one of the largest privately held [more](#)
[Sold](#)



