

## All Real Estate Listings

### New Listing



### Caledon Farmland Investment Opportunity

A must see investment property and/or gorgeous country retreat! A beautiful 145 acre farm that stretches from Mountainview Road to Airport Road, just north of Caledon East. [...more](#)

[New Listing](#)



Residential Building Lots, Guelph

Newly created residential building lots in Exhibition Park area in the Junction. This is a great family neighbourhood! Walking distance to The Fixed Gear Brewing Canteen, [...more](#)

**New Listing**



[Tottenham Estate Property](#)

An incredible opportunity to acquire this 80 acre parcel to build your country estate! This property consists of rolling hills which is the ideal building location to enjoy [more](#)

[New Listing](#)



[Georgian Bay Beach House, Tiny](#)

Indulge in unmatched beachside living with a 2700 sq. ft. custom designed home on Nottawaga Beach. This distinctive 5-bedroom, 4-bathroom 1.5-storey home includes a separate ...more

**New Price**



20736 Mississauga Rd, Caledon

At the top of a quiet country road sits this lovely stone country home. The 5-bedroom home enjoys an elevated position and has a wonderful new kitchen, main floor primary [more](#)

[New Listing](#)



[Percy Lake 75 Acres](#)

A rare opportunity to acquire an incredibly large estate lot property. With just shy of 1/2 a mile of water frontage. This stunning 75-acre property is already subdivided [...more](#)



171 Kingscross Drive, King

Elegant 4-bedroom home in prestigious Kingscross Estates. Fully renovated home on private 2-ace lot with pool. Minutes to top schools. Wonderful flow for entertaining, with [...more](#)

**New Price**



Clover Creek Farm

Charming property with views over your own valley. 5 bedroom updated century home + guest house and an immaculate bank barn with 5 stalls. A wonderful layout with walk-out ...[more](#)

**New Listing**



Percy Lake, Haliburton

Privacy guaranteed on an untouched 4.5 acre south-facing cove lot. Flatware Cove Trail. Over 400 feet frontage of sandy beach, crystal clear water, building lot covered in [more](#)

**Priva  
Sold**

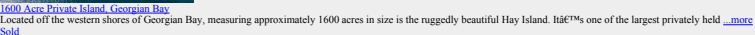
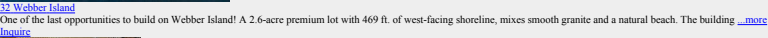
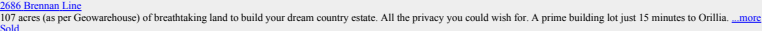


**Bond Hill - Country House Investment**

Amazing views from this privately sited home on 25 acres. A country property with long-term investment potential. Open lands border developer owned lands. Buy land and wait! [more](#)

Amazon  
Sold





100 Acres, King  
Life™s getting harder and harder to find large vacant acreage in King. 100 gently rolling acres with scenic views, neatly cropped land plus mature woodlot and pond. [...more](#)  
[New Listing](#)



[Apple Ridge Farm](#)  
One of Caledon's great Estates, Apple Ridge Farm comprises 113 acres held in 3 separate parcels. A 7,600 sq. foot stone and wood main residence, guest house, a 1850s [...more](#)  
[Sold](#)



[Hockley Valley Land](#)  
Very private, blank canvas of just under 100 acres on a no-through way road. Minutes outside of Hockley Valley is this increasingly rare to find opportunity to acquire a [...more](#)  
[Sold](#)



[90+ Acre Private Peninsula, Cognashene](#)  
The 90+ acre peninsula situated north-west of Bone Island offers a unique mixture of undulating elevations, an abundance of forest, and various granite outcroppings. Flanked [...more](#)  
[New Listing](#)



[Turkey Hill, King](#)  
It is hard to imagine better views. This custom 7000+ sq ft finished home was built for a noted home builder and has undergone a re-design by the current owners. The rolling [...more](#)  
More : Prev [12345678](#) [Next](#)

[All](#)  
[Properties](#)  
[Home](#)  
[New &](#)  
[Sold](#)  
[Commercial](#)  
[Vacation](#)  
[Buy](#)  
[Investment](#)  
[Farm](#)  
[Vac](#)  
[Region](#)  
[Sales](#)  
[Map](#)  
[Rent](#)  
[Home](#)  
[Contact](#)

**MOFFAT DUNLAP**  
REAL ESTATE LIMITED  
Moffat Dunlap Real Estate Limited, Brokerage  
166-90 Dufferin Street, King City, ON L7B 1K5  
Tel: 905-841-7430 [www.moffatdunlap.com](#)



Moffat Dunlap  
Real Estate Limited,  
Brokerage  
166-90 Dufferin Street  
King City  
ON L7B 1K5  
905-841-7430  
[Home](#) | [About Us](#) | [Contact Us](#)  
[Website Design by: www.moffatdunlap.com](#)

[Home](#) | [Privacy](#)  
[Notice](#)  
[Feedback](#)  
[By Outsource](#)  
[Contact](#)

X  
Keyword(s)   
Search  
X

[English](#)  
[Afrikaans](#)  
[Arabic](#)  
[Chinese \(simplified\)](#)  
[Chinese \(Traditional\)](#)  
[Danish](#)  
[Dutch](#)  
[Finnish](#)  
[French](#)  
[German](#)  
[Greek](#)  
[Hebrew](#)  
[Hindi](#)  
[Icelandic](#)  
[Indonesian](#)  
[Italian](#)  
[Japanese](#)  
[Korean](#)  
[Norwegian](#)  
[Persian](#)  
[Polish](#)  
[Portuguese](#)  
[Punjabi](#)  
[Russian](#)  
[Spanish](#)  
[Swedish](#)  
[Thai](#)  
[Turkish](#)  
[Urdu](#)  
[Vietnamese](#)

[English](#)  
[Afrikaans](#)  
[Arabic](#)  
[Chinese](#)  
[Chinese \(simpli\)](#)  
[Chinese](#)  
[\(trad\)](#)  
[Danish](#)  
[Dutch](#)  
[Finnish](#)  
[French](#)  
[German](#)  
[Greek](#)  
[Hebrew](#)  
[Hindi](#)  
[Icelandic](#)  
[Indonesian](#)

[Italian](#)  
[Japanese](#)  
[Korean](#)  
[Norwegian](#)  
[Persian](#)  
[Polish](#)  
[Portuguese](#)  
[Punjabi](#)  
[Russian](#)  
[Spanish](#)  
[Swedish](#)  
[Thai](#)  
[Turkish](#)  
[Urdu](#)  
[Vietnamese](#)