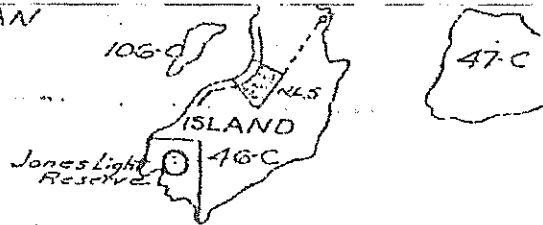
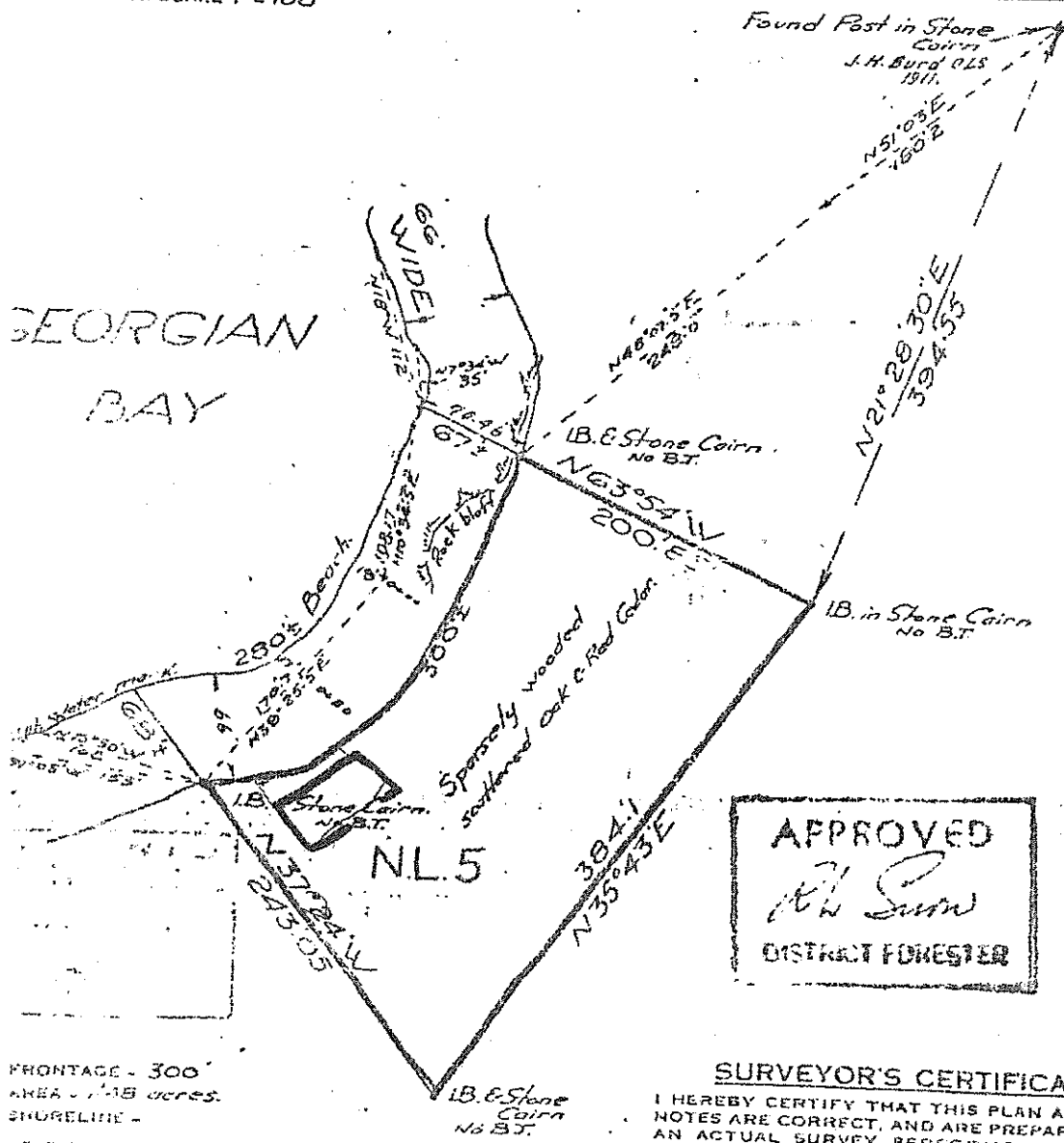


GEORGIAN BAY



DETAIL PLAN: SCALE 1" = 100'

GEORGIAN BAY



APPROVED
A. W. Sum
 DISTRICT FORESTER

SURVEYOR'S CERTIFICATE

I HEREBY CERTIFY THAT THIS PLAN AND FIELD NOTES ARE CORRECT, AND ARE PREPARED FROM AN ACTUAL SURVEY PERFORMED UNDER MY PERSONAL SUPERVISION AND THAT I WAS IN MY OWN PROPER PERSON PRESENT ON THE GROUND DURING THE PROGRESS OF SUCH SURVEY.

B. W. Brydges ONTARIO
 1914

FRONTAGE - 300'
 AREA - 1.18 acres.
 SHORELINE -

BEARINGS DERIVED FROM observation (Sun)
 Reference meridian through N.E. angle

NORTH EAST